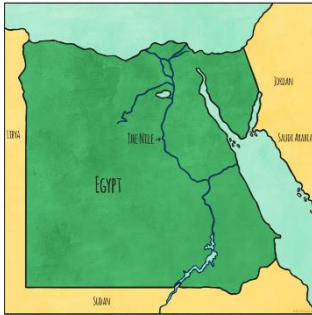


Hello Year 3. This half term we would have been studying plants in Science, along with exploring the Ancient Egyptians in our history and geography topics. Here are some ideas to try at home if you wish. Please feel free to send me any images of the work you have completed so I can take a look. Have fun!

**Geography** - We would have been studying Ancient Egypt at this point in school. Who can locate Egypt? Research Ancient Egypt. You could use resources on Twinkl to help you. Can you create a map of Ancient Egypt and label the key geographic features, such as the famous river which was key to transporting goods for trade?

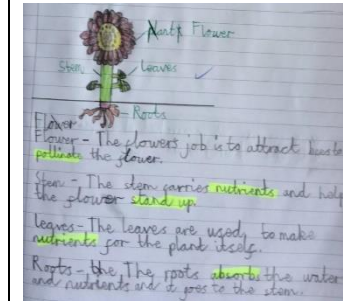


**History** - The Egyptians were one of the earliest civilisations and are best known for a number of achievements. To name one, early writing was formed using hieroglyphics. Can you create your name, or perhaps even write me an Ancient Egyptian encrypted clue using hieroglyphics?



Watch out for the symbols that can mean 2 different letters! You'll have to think carefully about which one it must be when you read the messages containing this hieroglyph.

**Science** We would have been starting plants - one of my favourite topics! Can you identify and describe the functions of different parts of flowering plants?



Watch the video about the different parts of a plant. Can you learn the song or create some actions to help you remember each part of a plant?

[https://www.youtube.com/watch?v=q6OL7\\_qEgU](https://www.youtube.com/watch?v=q6OL7_qEgU)

**Key vocabulary relating to parts of a plant.** Can you use this to help you label your diagram of a flowering plant and make sure you have explained the function of each part?

stem  
leaves  
roots  
flower  
pollinate  
nutrients  
anchor / stand up  
absorb  
photosynthesis

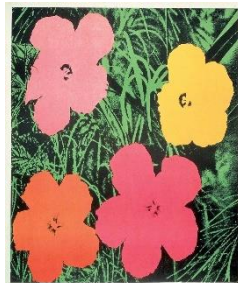
Check out the flowers in your garden. Can you identify any of the different parts?



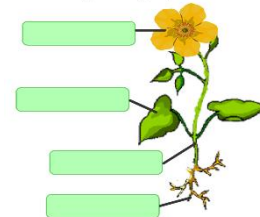
**Art**

Many famous artists such as Van Gogh and O' Keeffe, use plants to create 'Still Life' drawings,

Flowers are also the subject of many of Andy Warhol's technicolour images! Use the images below, or further research, to help inspire your own floral masterpiece!



**The parts of a plant**



There are lots of useful videos on the BBC website which explain about plants. We are not exploring the life cycle of a plant yet - that will be in the next few weeks. Follow these links:

**What is a plant?**

<https://www.bbc.co.uk/bitesize/topics/zy66fg8/articles/zcjp39>

**What does a plant need to live?**

<https://www.bbc.co.uk/bitesize/topics/zy66fg8/articles/zcmrk2p>

**Why are bees attracted to flowers?**

<https://www.bbc.co.uk/bitesize/topics/zy66fg8/articles/zt4ktv4>

**What are the requirements for plant growth?**

<https://www.bbc.co.uk/bitesize/topics/zy66fg8/articles/z98jpbk>

**Why are plants important?**

<https://www.bbc.co.uk/bitesize/topics/zt4ktv4/articles/zss9msg>