



# WELCOME TO YEAR 3

Mr Dyke



# MEET OUR STAFF

Mrs Kurton – Year 3 teaching assistant

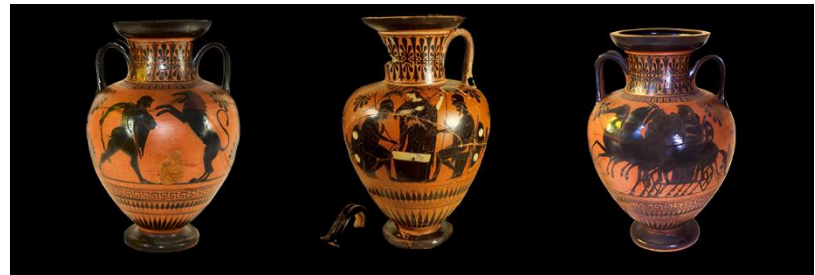
Mrs Fletcher – PPA teacher (PSHE)

Iain – PPA teacher (PE)

Mr Whitehill – NQT time (MFL)

# YEAR 3 TOPICS

Ancient Greece



Great Britain



Vikings



Homework – set on Monday in for Friday

Reading raffle on Fridays and new books are available for the children to read!

School trips – parents are welcome! Some trips may be first come first serve!

Behaviour policy – Good to be Green, house points and dojos!

Speak to class teacher before deputy or head teacher if there are any problems.



	Monday	Tuesday	Wednesday	Thursday	Friday
<b>Session 1</b> <b>9-10.10AM</b>	Morning challenge Maths	Morning challenge Maths	PPA PSHE with <u>Mrs.</u> Fletcher PE with Iain	SINGING 9-30 & handwriting group. Mental maths	Spelling test Literacy
<i>Break</i> <i>10.10-10.25</i>					
<b>Session 2</b> <b>10.25-11.25</b>	Literacy	Literacy		French (Miss <u>Foulds</u> )	Maths
<i>Assembly/break</i> <i>11.25-11.40</i>	Guided reading groups	Guided reading groups			<i>Merit assembly</i>
<b>Session 3</b> <b>11.40-12.30</b>	e-safety	Guided reading carousel	Handwriting	Computing	Reading raffle and in class certificates
<i>Lunch</i> <i>12.30-13.30</i>					
<b>Session 4</b> <b>13.30-14.25</b>	P.E	Art/D&T	Topic	Science	Topic/music
<i>Break</i> <i>14.25-14.40</i>					
<b>Session 5</b> <b>14.40-15.25</b>	Set homework	Art/D&T	Topic	Science	Golden time

# LITERACY

Reading – free readers or reading scheme <http://www.lovereadings4kids.co.uk/>

Reading with expression, discussing character's thoughts, feeling and motives and making predictions

Writing (themes – myths and legends, play scripts, non-fiction texts, adventure and mystery, poetry)

Spelling (prefixes and suffixes, homophones, high frequency words)

Punctuation (speech marks, apostrophes)

Grammar -writing in paragraphs and using conjunctions

Handwriting – cursive

Alan Peat sentences ☺



# MATHEMATICS



Place value (hundreds, tens and units)

Addition and subtraction (mental and column addition and subtraction)

Multiplication and division (3, 4 and 8 x tables)

Fractions (tenths, adding and subtracting fractions and finding fractions of amounts)

Shape (draw and make 2 and 3-D shapes and right angles)

Measurement (telling the time, adding and subtracting money, measuring lengths, mass and volume)

Statistics (using bar charts and pictograms and tables)

Word problems involving all of the above.

Calculation policy (see school website or see me for a hard copy).



# SCIENCE

Forces and magnets

Sound

Electricity

Plants

Animals, including humans.





# COMPUTING

e-Safety

Using the ICT suite for text processing

Programming on iPads; hopscotch and logo.



# FOUNDATION

History – Ancient Greeks, Vikings, Battle of Hastings

Geography – regions of great britain, map work of Europe, tourism, Google earth

Art – water colouring, Greek pots, oil pastels, sketching, Matisse, Viking shields

Design and technology – Viking longboats, jewellery, food tasting

PE – twice a week (PE kits in all week), swimming

MFL –French

R.E. – link with Year 4

Music – singing and lessons.



# FANCY HELPING OUT?

School trips – Tatton Park (May)

Art projects

Reading with children

Gardening with small groups.



If you wish to speak to me, see me at the gate at the end of the day or ring/e-mail the office to contact me.

Thank you,

Mr Dyke